

NOAA Atlas 14, Volume 11, Version 2
Texas

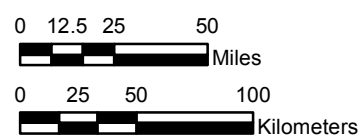
TEXAS

Isopluvials of 5-year 6-hour precipitation in inches

SCALE 1:3,250,000



Prepared by U.S. DEPARTMENT OF COMMERCE
NATIONAL OCEANIC AND ATMOSPHERIC ADMINISTRATION
NATIONAL WEATHER SERVICE
OFFICE OF WATER PREDICTION
HYDROMETEOROLOGICAL DESIGN STUDIES CENTER
September 2018



Projection: Lambert Conformal Conic; Datum NAD83; Standard Parallels: 36°N and 41°N; Central Meridian 99.5°W.



1.55 - 1.75	2.51 - 2.75	3.51 - 3.75	4.51 - 4.75
1.76 - 2.00	2.76 - 3.00	3.76 - 4.00	4.76 - 5.00
2.01 - 2.25	3.01 - 3.25	4.01 - 4.25	5.01 - 5.25
2.26 - 2.50	3.26 - 3.50	4.26 - 4.50	5.26 - 5.50
			5.51 - 5.55