


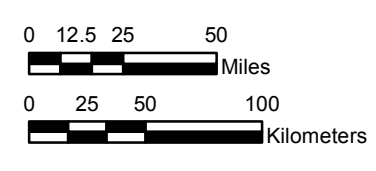
NOAA Atlas 14, Volume 11, Version 2  
Texas

# TEXAS

Isopluvials of 5-year 24-hour precipitation in inches

SCALE 1:3,250,000


 Prepared by U.S. DEPARTMENT OF COMMERCE  
 NATIONAL OCEANIC AND ATMOSPHERIC ADMINISTRATION  
 NATIONAL WEATHER SERVICE  
 OFFICE OF WATER PREDICTION  
 HYDROMETEOROLOGICAL DESIGN STUDIES CENTER  
 September 2018



Projection: Lambert Conformal Conic; Datum NAD83; Standard Parallels: 36° N and 41° N; Central Meridian 99.5° W.



1.97 - 2.00	3.01 - 3.50	4.51 - 5.00	6.01 - 6.50
2.01 - 2.50	3.51 - 4.00	5.01 - 5.50	6.51 - 7.00
2.51 - 3.00	4.01 - 4.50	5.51 - 6.00	7.01 - 7.50
			7.51 - 7.62