


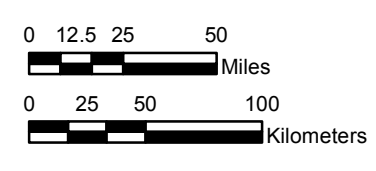
NOAA Atlas 14, Volume 11, Version 2  
Texas

# TEXAS

Isopluvials of 50-year 6-hour precipitation in inches

SCALE 1:3,250,000


 Prepared by U.S. DEPARTMENT OF COMMERCE  
 NATIONAL OCEANIC AND ATMOSPHERIC ADMINISTRATION  
 NATIONAL WEATHER SERVICE  
 OFFICE OF WATER PREDICTION  
 HYDROMETEOROLOGICAL DESIGN STUDIES CENTER  
 September 2018



Projection: Lambert Conformal Conic; Datum NAD83; Standard Parallels: 36° N and 41° N; Central Meridian 99.5° W.



2.50 - 2.50	4.01 - 4.50	6.01 - 6.50	8.01 - 8.50
2.51 - 3.00	4.51 - 5.00	6.51 - 7.00	8.51 - 9.00
3.01 - 3.50	5.01 - 5.50	7.01 - 7.50	9.01 - 9.50
3.51 - 4.00	5.51 - 6.00	7.51 - 8.00	9.51 - 10.00
			10.01 - 10.49