


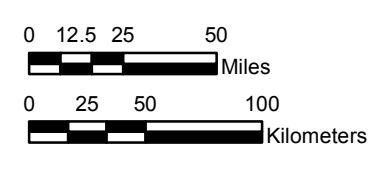
NOAA Atlas 14, Volume 11, Version 2
Texas

TEXAS

Isopluvials of 50-year 60-minute precipitation in inches

SCALE 1:3,250,000


 Prepared by U.S. DEPARTMENT OF COMMERCE
 NATIONAL OCEANIC AND ATMOSPHERIC ADMINISTRATION
 NATIONAL WEATHER SERVICE
 OFFICE OF WATER PREDICTION
 HYDROMETEOROLOGICAL DESIGN STUDIES CENTER
 September 2018



Projection: Lambert Conformal Conic; Datum NAD83; Standard Parallels: 36° N and 41° N; Central Meridian 99.5° W.



1.82 - 2.00	2.51 - 2.75	3.26 - 3.50	4.01 - 4.25
2.01 - 2.25	2.76 - 3.00	3.51 - 3.75	4.26 - 4.50
2.26 - 2.50	3.01 - 3.25	3.76 - 4.00	4.51 - 4.74