


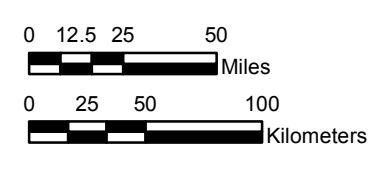
NOAA Atlas 14, Volume 11, Version 2
Texas

TEXAS

Isopluvials of 50-year 24-hour precipitation in inches

SCALE 1:3,250,000


 Prepared by U.S. DEPARTMENT OF COMMERCE
 NATIONAL OCEANIC AND ATMOSPHERIC ADMINISTRATION
 NATIONAL WEATHER SERVICE
 OFFICE OF WATER PREDICTION
 HYDROMETEOROLOGICAL DESIGN STUDIES CENTER
 September 2018



Projection: Lambert Conformal Conic; Datum NAD83; Standard Parallels: 36° N and 41° N; Central Meridian 99.5° W.



3.38 - 4.00	6.01 - 7.00	9.01 - 10.00	12.01 - 13.00
4.01 - 5.00	7.01 - 8.00	10.01 - 11.00	13.01 - 14.00
5.01 - 6.00	8.01 - 9.00	11.01 - 12.00	14.01 - 15.00
			15.01 - 15.25