


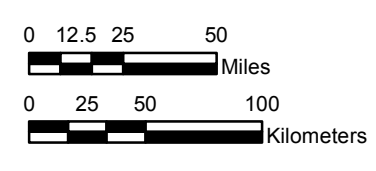
NOAA Atlas 14, Volume 11, Version 2
Texas

TEXAS

Isopluvials of 25-year 60-minute precipitation in inches

SCALE 1:3,250,000


 Prepared by U.S. DEPARTMENT OF COMMERCE
 NATIONAL OCEANIC AND ATMOSPHERIC ADMINISTRATION
 NATIONAL WEATHER SERVICE
 OFFICE OF WATER PREDICTION
 HYDROMETEOROLOGICAL DESIGN STUDIES CENTER
 September 2018



Projection: Lambert Conformal Conic; Datum NAD83; Standard Parallels: 36° N and 41° N; Central Meridian 99.5° W.



1.62 - 1.80	2.21 - 2.40	2.81 - 3.00	3.41 - 3.60
1.81 - 2.00	2.41 - 2.60	3.01 - 3.20	3.61 - 3.80
2.01 - 2.20	2.61 - 2.80	3.21 - 3.40	3.81 - 4.00
			4.01 - 4.19