

NOAA Atlas 14, Volume 11, Version 2  
Texas

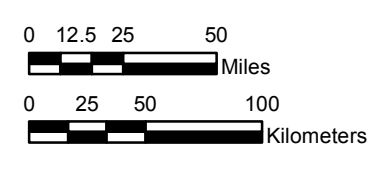
# TEXAS

Isopluvials of 25-year 24-hour precipitation in inches

SCALE 1:3,250,000



Prepared by U.S. DEPARTMENT OF COMMERCE  
NATIONAL OCEANIC AND ATMOSPHERIC ADMINISTRATION  
NATIONAL WEATHER SERVICE  
OFFICE OF WATER PREDICTION  
HYDROMETEOROLOGICAL DESIGN STUDIES CENTER  
September 2018



Projection: Lambert Conformal Conic; Datum NAD83; Standard Parallels: 36° N and 41° N; Central Meridian 99.5° W.



3.01 - 4.00	6.01 - 7.00	9.01 - 10.00	12.01 - 12.57
4.01 - 5.00	7.01 - 8.00	10.01 - 11.00	
5.01 - 6.00	8.01 - 9.00	11.01 - 12.00	