

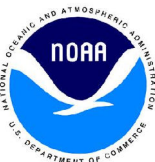


NOAA Atlas 14, Volume 11, Version 2
Texas

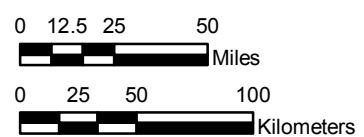
TEXAS

Isopluvials of 2-year 60-minute precipitation in inches

SCALE 1:3,250,000



Prepared by U.S. DEPARTMENT OF COMMERCE
NATIONAL OCEANIC AND ATMOSPHERIC ADMINISTRATION
NATIONAL WEATHER SERVICE
OFFICE OF WATER PREDICTION
HYDROMETEOROLOGICAL DESIGN STUDIES CENTER
May 2016



Projection: Lambert Conformal Conic; Datum NAD83; Standard Parallels: 36°N and 41°N; Central Meridian 99.5°W.

