

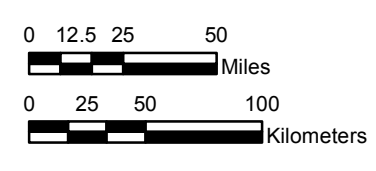
NOAA Atlas 14, Volume 11, Version 2  
Texas

# TEXAS

Isopluvials of 10-year 6-hour precipitation in inches

SCALE 1:3,250,000

Prepared by U.S. DEPARTMENT OF COMMERCE  
NATIONAL OCEANIC AND ATMOSPHERIC ADMINISTRATION  
NATIONAL WEATHER SERVICE  
OFFICE OF WATER PREDICTION  
HYDROMETEOROLOGICAL DESIGN STUDIES CENTER  
September 2018



Projection: Lambert Conformal Conic; Datum NAD83; Standard Parallels: 36° N and 41° N; Central Meridian 99.5° W.



1.82 - 2.00	3.01 - 3.50	4.51 - 5.00	6.01 - 6.50
2.01 - 2.50	3.51 - 4.00	5.01 - 5.50	6.51 - 6.85
2.51 - 3.00	4.01 - 4.50	5.51 - 6.00	