


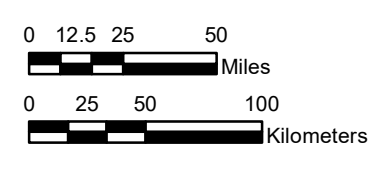
NOAA Atlas 14, Volume 11, Version 2  
Texas

# TEXAS

Isopluvials of 100-year 60-minute precipitation in inches

SCALE 1:3,250,000


 Prepared by U.S. DEPARTMENT OF COMMERCE  
 NATIONAL OCEANIC AND ATMOSPHERIC ADMINISTRATION  
 NATIONAL WEATHER SERVICE  
 OFFICE OF WATER PREDICTION  
 HYDROMETEOROLOGICAL DESIGN STUDIES CENTER  
 September 2018



Projection: Lambert Conformal Conic; Datum NAD83; Standard Parallels: 36°N and 41°N; Central Meridian 99.5°W.



2.01 - 2.25	3.01 - 3.25	4.01 - 4.25	5.01 - 5.25
2.26 - 2.50	3.26 - 3.50	4.26 - 4.50	5.26 - 5.36
2.51 - 2.75	3.51 - 3.75	4.51 - 4.75	
2.76 - 3.00	3.76 - 4.00	4.76 - 5.00	