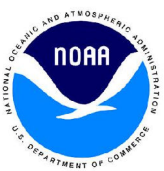


NOAA Atlas 14, Volume 11, Version 2
Texas

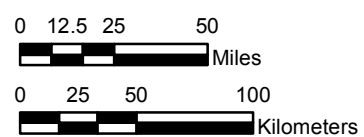
TEXAS

Isopluvials of 100-year 30-day precipitation in inches

SCALE 1:3,250,000



Prepared by U.S. DEPARTMENT OF COMMERCE
NATIONAL OCEANIC AND ATMOSPHERIC ADMINISTRATION
NATIONAL WEATHER SERVICE
OFFICE OF WATER PREDICTION
HYDROMETEOROLOGICAL DESIGN STUDIES CENTER
September 2018



Projection: Lambert Conformal Conic; Datum NAD83; Standard Parallels: 36°N and 41°N; Central Meridian 99.5°W.



7.20 - 8.00	14.01 - 16.00	22.01 - 24.00	30.01 - 32.00
8.01 - 10.00	16.01 - 18.00	24.01 - 26.00	32.01 - 33.93
10.01 - 12.00	18.01 - 20.00	26.01 - 28.00	
12.01 - 14.00	20.01 - 22.00	28.01 - 30.00	