

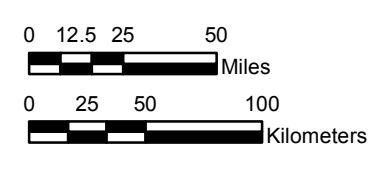
NOAA Atlas 14, Volume 11, Version 2
Texas

TEXAS

Isopluvials of 100-year 24-hour precipitation in inches

SCALE 1:3,250,000

Prepared by U.S. DEPARTMENT OF COMMERCE
NATIONAL OCEANIC AND ATMOSPHERIC ADMINISTRATION
NATIONAL WEATHER SERVICE
OFFICE OF WATER PREDICTION
HYDROMETEOROLOGICAL DESIGN STUDIES CENTER
September 2018



Projection: Lambert Conformal Conic; Datum NAD83; Standard Parallels: 36° N and 41° N; Central Meridian 99.5° W.



3.75 - 4.00	7.01 - 8.00	11.01 - 12.00	15.01 - 16.00
4.01 - 5.00	8.01 - 9.00	12.01 - 13.00	16.01 - 17.00
5.01 - 6.00	9.01 - 10.00	13.01 - 14.00	17.01 - 18.00
6.01 - 7.00	10.01 - 11.00	14.01 - 15.00	18.01 - 18.41