


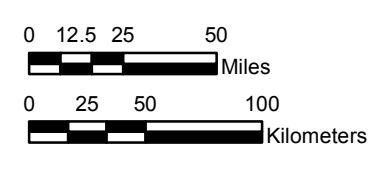
NOAA Atlas 14, Volume 11, Version 2  
Texas

# TEXAS

Isopluvials of 100-year 10-day precipitation in inches

SCALE 1:3,250,000


 Prepared by U.S. DEPARTMENT OF COMMERCE  
 NATIONAL OCEANIC AND ATMOSPHERIC ADMINISTRATION  
 NATIONAL WEATHER SERVICE  
 OFFICE OF WATER PREDICTION  
 HYDROMETEOROLOGICAL DESIGN STUDIES CENTER  
 September 2018



Projection: Lambert Conformal Conic; Datum NAD83; Standard Parallels: 36° N and 41° N; Central Meridian 99.5° W.



5.42 - 6.00	10.01 - 12.00	16.01 - 18.00	22.01 - 24.00
6.01 - 8.00	12.01 - 14.00	18.01 - 20.00	24.01 - 26.00
8.01 - 10.00	14.01 - 16.00	20.01 - 22.00	26.01 - 28.00
			28.01 - 29.45