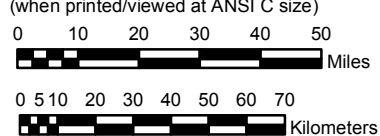


# UTAH

**NOAA Atlas 14, Volume 1, Version 5**  
**Semiarid Southwestern United States**

Prepared by U.S. DEPARTMENT OF COMMERCE  
 NATIONAL OCEANIC AND ATMOSPHERIC ADMINISTRATION  
 NATIONAL WEATHER SERVICE  
 OFFICE OF HYDROLOGIC DEVELOPMENT  
 HYDROMETEOROLOGICAL DESIGN STUDIES CENTER  
 June 2006

SCALE 1:2,000,000  
 (when printed/viewed at ANSI C size)



**Isopluvials of 6 hour precipitation (inches)**  
**with Average Recurrence Interval of 50 years**

See NOAA Atlas 14 documentation for factors to  
 convert to Annual Exceedance Probabilities for  
 all estimates below 25 years



## Inches

1.08 - 1.20	1.81 - 2.00	2.61 - 2.80	4.01 - 4.50	6.01 - 6.50
1.21 - 1.40	2.01 - 2.20	2.81 - 3.00	4.51 - 5.00	6.51 - 7.00
1.41 - 1.60	2.21 - 2.40	3.01 - 3.50	5.01 - 5.50	7.01 - 7.50
1.61 - 1.80	2.41 - 2.60	3.51 - 4.00	5.51 - 6.00	

Projection: Lambert Conformal Conic, Datum NAD83, Standard Parallels: 38° and 45°, Central Meridian 112°