

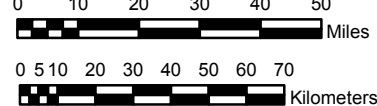
UTAH

NOAA Atlas 14, Volume 1, Version 5 Semi-arid Southwestern United States

Prepared by U.S. DEPARTMENT OF COMMERCE
NATIONAL OCEANIC AND ATMOSPHERIC ADMINISTRATION
NATIONAL WEATHER SERVICE
OFFICE OF HYDROLOGIC DEVELOPMENT
HYDROMETEOROLOGICAL DESIGN STUDIES CENTER
June 2006

SCALE 1:2,000,000

(when printed/viewed at ANSI C size)



Isopluvials of 60 minute precipitation (inches) with Average Recurrence Interval of 2 years

See NOAA Atlas 14 documentation for factors to
convert to Annual Exceedance Probabilities for
all estimates below 25 years

Inches



Projection: Lambert Conformal Conic, Datum NAD83, Standard Parallels: 38° and 45°, Central Meridian 112°