

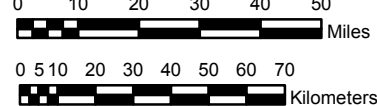
# UTAH

## NOAA Atlas 14, Volume 1, Version 5 Semi-arid Southwestern United States

Prepared by U.S. DEPARTMENT OF COMMERCE  
NATIONAL OCEANIC AND ATMOSPHERIC ADMINISTRATION  
NATIONAL WEATHER SERVICE  
OFFICE OF HYDROLOGIC DEVELOPMENT  
HYDROMETEOROLOGICAL DESIGN STUDIES CENTER  
June 2006

SCALE 1:2,000,000

(when printed/viewed at ANSI C size)



## Isopluals of 24 hour precipitation (inches) with Average Recurrence Interval of 2 years

See NOAA Atlas 14 documentation for factors to  
convert to Annual Exceedance Probabilities for  
all estimates below 25 years



### Inches



Projection: Lambert Conformal Conic, Datum NAD83, Standard Parallels: 38° and 45°, Central Meridian 112°