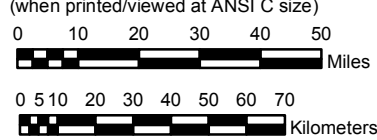


**NOAA Atlas 14, Volume 1, Version 5
Semi-arid Southwestern United States**

Prepared by U.S. DEPARTMENT OF COMMERCE
NATIONAL OCEANIC AND ATMOSPHERIC ADMINISTRATION
NATIONAL WEATHER SERVICE
OFFICE OF HYDROLOGIC DEVELOPMENT
HYDROMETEOROLOGICAL DESIGN STUDIES CENTER
June 2006

SCALE 1:2,000,000
(when printed/viewed at ANSI C size)



**Isopluvials of 6 hour precipitation (inches)
with Average Recurrence Interval of 100 years**

See NOAA Atlas 14 documentation for factors to
convert to Annual Exceedance Probabilities for
all estimates below 25 years



Inches

1.22 - 1.40	2.01 - 2.20	2.81 - 3.00	4.51 - 5.00	6.51 - 7.00
1.41 - 1.60	2.21 - 2.40	3.01 - 3.50	5.01 - 5.50	7.01 - 7.50
1.61 - 1.80	2.41 - 2.60	3.51 - 4.00	5.51 - 6.00	7.51 - 8.00
1.81 - 2.00	2.61 - 2.80	4.01 - 4.50	6.01 - 6.50	

Projection: Lambert Conformal Conic, Datum NAD83, Standard Parallels: 38° and 45°, Central Meridian 112°