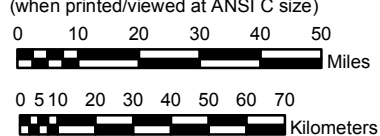


# UTAH

**NOAA Atlas 14, Volume 1, Version 5**  
**Semiarid Southwestern United States**

Prepared by U.S. DEPARTMENT OF COMMERCE  
 NATIONAL OCEANIC AND ATMOSPHERIC ADMINISTRATION  
 NATIONAL WEATHER SERVICE  
 OFFICE OF HYDROLOGIC DEVELOPMENT  
 HYDROMETEOROLOGICAL DESIGN STUDIES CENTER  
 June 2006

SCALE 1:2,000,000  
 (when printed/viewed at ANSI C size)

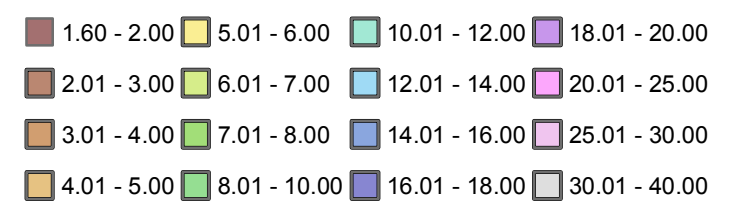


**Isopluvials of 10 day precipitation (inches)**  
**with Average Recurrence Interval of 100 years**

See NOAA Atlas 14 documentation for factors to  
 convert to Annual Exceedance Probabilities for  
 all estimates below 25 years



## Inches



Projection: Lambert Conformal Conic; Datum: NAD83; Standard Parallels: 38° and 45°; Central Meridian: 112°