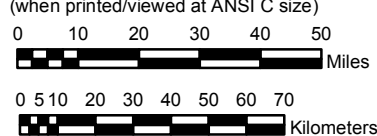


NEW MEXICO

NOAA Atlas 14, Volume 1, Version 5
Semiarid Southwestern United States

Prepared by U.S. DEPARTMENT OF COMMERCE
 NATIONAL OCEANIC AND ATMOSPHERIC ADMINISTRATION
 NATIONAL WEATHER SERVICE
 OFFICE OF HYDROLOGIC DEVELOPMENT
 HYDROMETEOROLOGICAL DESIGN STUDIES CENTER
 June 2006

SCALE 1:2,000,000
 (when printed/viewed at ANSI C size)



Isopluvials of 60 minute precipitation (inches)
with Average Recurrence Interval of 5 years

See NOAA Atlas 14 documentation for factors to
 convert to Annual Exceedance Probabilities for
 all estimates below 25 years



Inches

0.31 - 0.40	0.81 - 0.90	1.31 - 1.40	1.81 - 1.90	2.31 - 2.40
0.41 - 0.50	0.91 - 1.00	1.41 - 1.50	1.91 - 2.00	2.41 - 2.50
0.51 - 0.60	1.01 - 1.10	1.51 - 1.60	2.01 - 2.10	
0.61 - 0.70	1.11 - 1.20	1.61 - 1.70	2.11 - 2.20	
0.71 - 0.80	1.21 - 1.30	1.71 - 1.80	2.21 - 2.30	

Projection: Lambert Conformal Conic; Datum: NAD83; Standard Parallels: 38° and 45°; Central Meridian: 112°