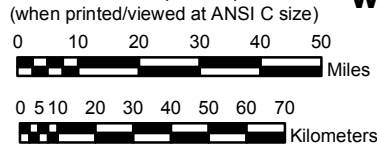


# NEW MEXICO

## NOAA Atlas 14, Volume 1, Version 5 Semiarid Southwestern United States

Prepared by U.S. DEPARTMENT OF COMMERCE  
NATIONAL OCEANIC AND ATMOSPHERIC ADMINISTRATION  
NATIONAL WEATHER SERVICE  
OFFICE OF HYDROLOGIC DEVELOPMENT  
HYDROMETEOROLOGICAL DESIGN STUDIES CENTER  
June 2006

SCALE 1:2,000,000  
(when printed/viewed at ANSI C size)



### Isopluvials of 6 hour precipitation (inches) with Average Recurrence Interval of 25 years

See NOAA Atlas 14 documentation for factors to  
convert to Annual Exceedance Probabilities for  
all estimates below 25 years



#### Inches

0.95 - 1.00	1.81 - 2.00	3.01 - 3.20	4.21 - 4.40	5.41 - 5.60
1.01 - 1.10	2.01 - 2.20	3.21 - 3.40	4.41 - 4.60	5.61 - 5.80
1.11 - 1.20	2.21 - 2.40	3.41 - 3.60	4.61 - 4.80	5.81 - 6.00
1.21 - 1.40	2.41 - 2.60	3.61 - 3.80	4.81 - 5.00	6.01 - 6.20
1.41 - 1.60	2.61 - 2.80	3.81 - 4.00	5.01 - 5.20	6.21 - 6.40
1.61 - 1.80	2.81 - 3.00	4.01 - 4.20	5.21 - 5.40	6.41 - 6.60

Projection: Lambert Conformal Conic, Datum NAD83, Standard Parallels: 38° and 45°; Central Meridian 112°