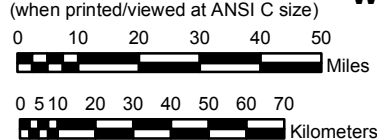


NEW MEXICO

NOAA Atlas 14, Volume 1, Version 5 Semiarid Southwestern United States

Prepared by U.S. DEPARTMENT OF COMMERCE
NATIONAL OCEANIC AND ATMOSPHERIC ADMINISTRATION
NATIONAL WEATHER SERVICE
OFFICE OF HYDROLOGIC DEVELOPMENT
HYDROMETEOROLOGICAL DESIGN STUDIES CENTER
June 2006

SCALE 1:2,000,000
(when printed/viewed at ANSI C size)



Isopluvials of 60 minute precipitation (inches) with Average Recurrence Interval of 25 years

See NOAA Atlas 14 documentation for factors to
convert to Annual Exceedance Probabilities for
all estimates below 25 years



Inches

0.56 - 0.60	1.11 - 1.20	1.71 - 1.80	2.31 - 2.40	2.91 - 3.00
0.61 - 0.70	1.21 - 1.30	1.81 - 1.90	2.41 - 2.50	3.01 - 3.10
0.71 - 0.80	1.31 - 1.40	1.91 - 2.00	2.51 - 2.60	3.11 - 3.20
0.81 - 0.90	1.41 - 1.50	2.01 - 2.10	2.61 - 2.70	3.21 - 3.30
0.91 - 1.00	1.51 - 1.60	2.11 - 2.20	2.71 - 2.80	3.31 - 3.40
1.01 - 1.10	1.61 - 1.70	2.21 - 2.30	2.81 - 2.90	3.41 - 3.50

Projection: Lambert Conformal Conic, Datum NAD83, Standard Parallels: 38° and 45°; Central Meridian 112°