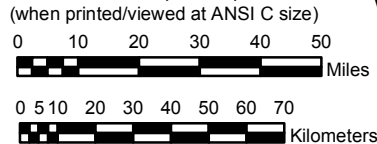


NEW MEXICO

NOAA Atlas 14, Volume 1, Version 5 Semiarid Southwestern United States

Prepared by U.S. DEPARTMENT OF COMMERCE
NATIONAL OCEANIC AND ATMOSPHERIC ADMINISTRATION
NATIONAL WEATHER SERVICE
OFFICE OF HYDROLOGIC DEVELOPMENT
HYDROMETEOROLOGICAL DESIGN STUDIES CENTER
June 2006

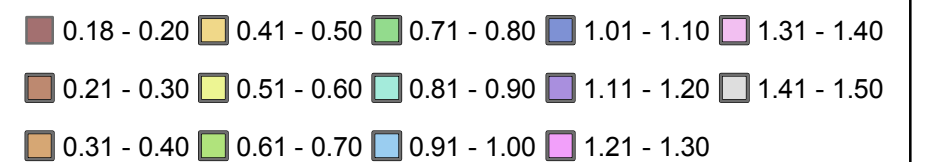
SCALE 1:2,000,000
(when printed/viewed at ANSI C size)



Isopluvials of 60 minute precipitation (inches) with Average Recurrence Interval of 1 year

See NOAA Atlas 14 documentation for factors to
convert to Annual Exceedance Probabilities for
all estimates below 25 years

Inches



Projection: Lambert Conformal Conic; Datum: NAD83; Standard Parallels: 38° and 45°; Central Meridian: 112°