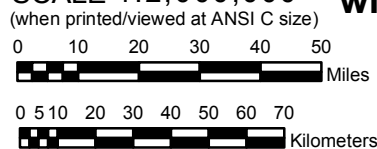


# NEW MEXICO

## NOAA Atlas 14, Volume 1, Version 5 Semiarid Southwestern United States

Prepared by U.S. DEPARTMENT OF COMMERCE  
NATIONAL OCEANIC AND ATMOSPHERIC ADMINISTRATION  
NATIONAL WEATHER SERVICE  
OFFICE OF HYDROLOGIC DEVELOPMENT  
HYDROMETEOROLOGICAL DESIGN STUDIES CENTER  
June 2006

SCALE 1:2,000,000

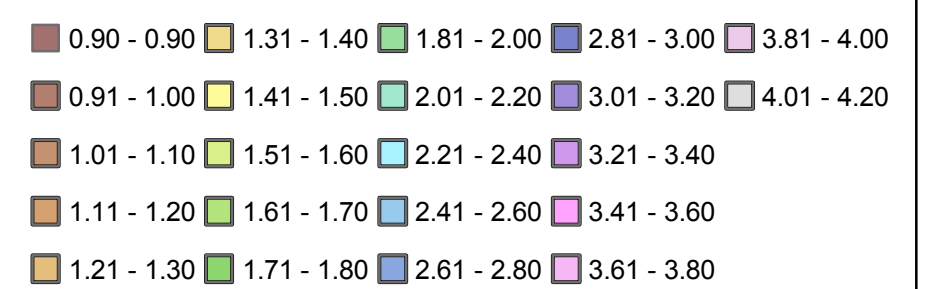


### Isopluvials of 60 minute precipitation (inches) with Average Recurrence Interval of 100 years

See NOAA Atlas 14 documentation for factors to  
convert to Annual Exceedance Probabilities for  
all estimates below 25 years



### Inches



Projection: Lambert Conformal Conic, Datum NAD83, Standard Parallels: 38° and 45°; Central Meridian 112°