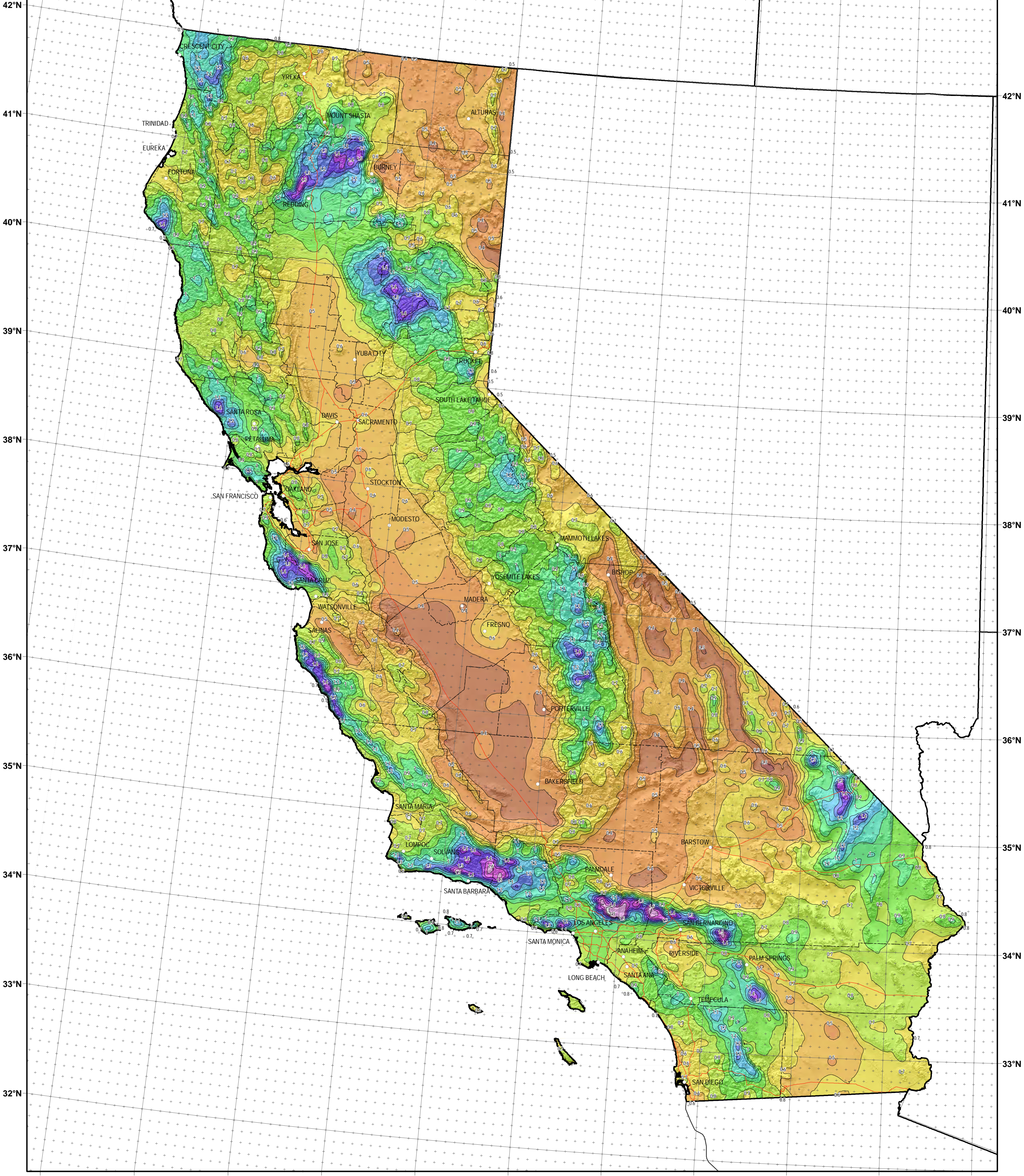


126°W 125°W 124°W 123°W 122°W 121°W 120°W 119°W 118°W 117°W 116°W 115°W



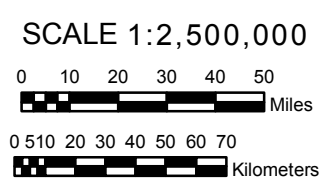
124°W 123°W 122°W 121°W 120°W 119°W 118°W 117°W 116°W 115°W 114°W

CALIFORNIA

NOAA Atlas 14, Volume 6, Version 2
California

Isopluvials of 5-year 60-minute precipitation in inches

Prepared by U.S. DEPARTMENT OF COMMERCE
 NATIONAL OCEANIC AND ATMOSPHERIC ADMINISTRATION
 NATIONAL WEATHER SERVICE
 OFFICE OF HYDROLOGIC DEVELOPMENT
 HYDROMETEOROLOGICAL DESIGN STUDIES CENTER
 April 2011



- 0.21 - 0.30
- 0.31 - 0.40
- 0.41 - 0.50
- 0.51 - 0.60
- 0.61 - 0.70
- 0.71 - 0.80
- 0.81 - 0.90
- 0.91 - 1.00
- 1.01 - 1.10
- 1.11 - 1.20
- 1.21 - 1.30
- 1.31 - 1.40
- 1.41 - 1.50
- 1.51 - 1.60
- 1.61 - 1.70
- 1.71 - 1.76

Projection: Lambert Conformal Conic; Datum: NAD83; Standard Parallels: 38° and 45°; Central Meridian: 112°