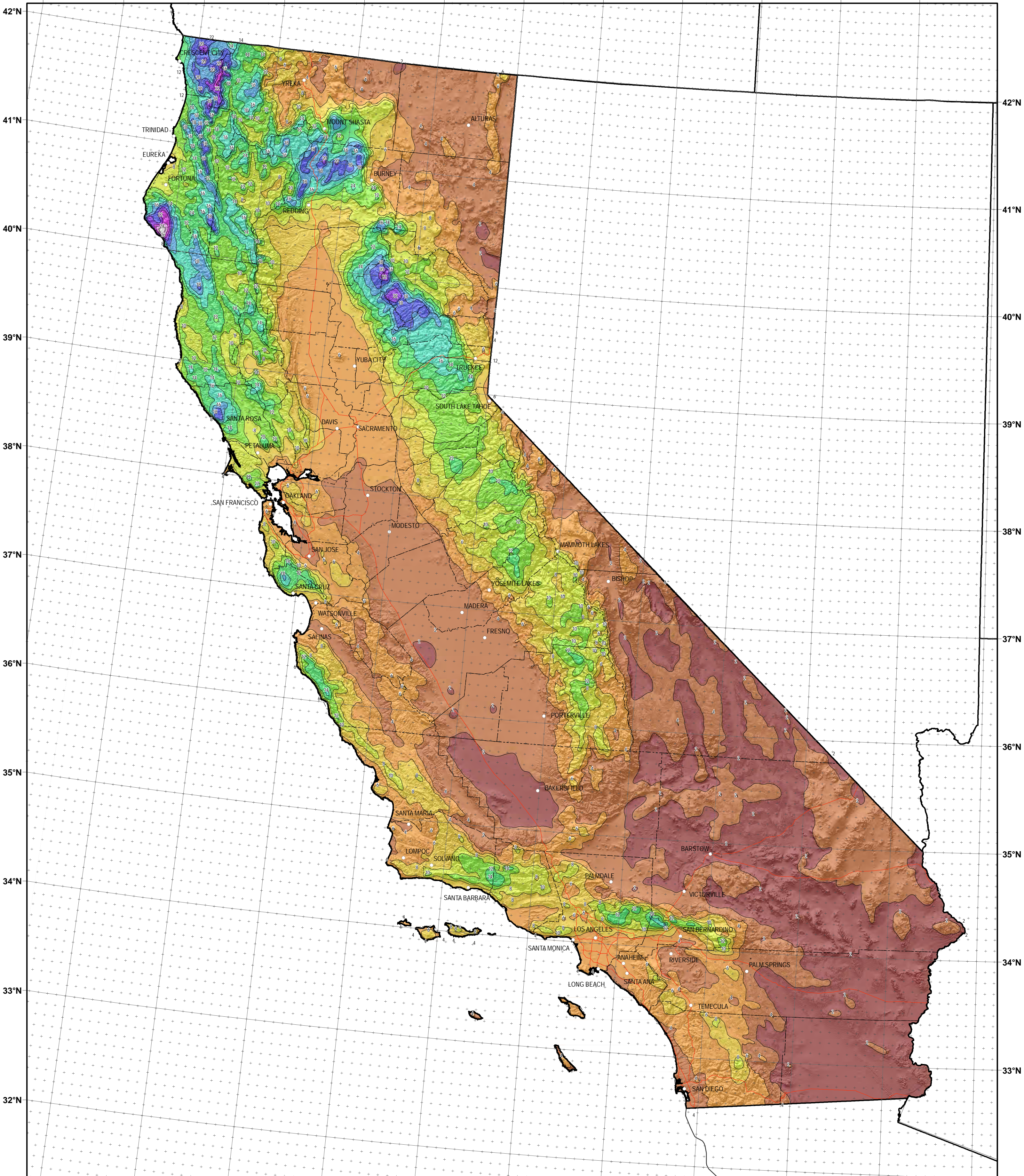


126°W 125°W 124°W 123°W 122°W 121°W 120°W 119°W 118°W 117°W 116°W 115°W



124°W 123°W 122°W 121°W 120°W 119°W 118°W 117°W 116°W 115°W 114°W

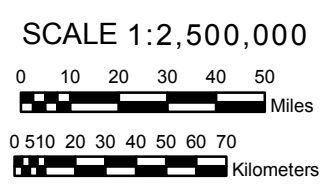
CALIFORNIA

NOAA Atlas 14, Volume 6, Version 2
California

Isopluvials of 2-year 10-day precipitation in inches

- 0.79 - 2.00
- 2.01 - 4.00
- 4.01 - 6.00
- 6.01 - 8.00
- 8.01 - 10.00
- 10.01 - 12.00
- 12.01 - 14.00
- 14.01 - 16.00
- 16.01 - 18.00
- 18.01 - 20.00
- 20.01 - 22.00
- 22.01 - 24.00
- 24.01 - 26.00
- 26.01 - 27.76

Prepared by U.S. DEPARTMENT OF COMMERCE
NATIONAL OCEANIC AND ATMOSPHERIC ADMINISTRATION
NATIONAL WEATHER SERVICE
OFFICE OF HYDROLOGIC DEVELOPMENT
HYDROMETEOROLOGICAL DESIGN STUDIES CENTER
April 2011



Projection: Lambert Conformal Conic; Datum: NAD83; Standard Parallels: 38° and 45°; Central Meridian: 112°