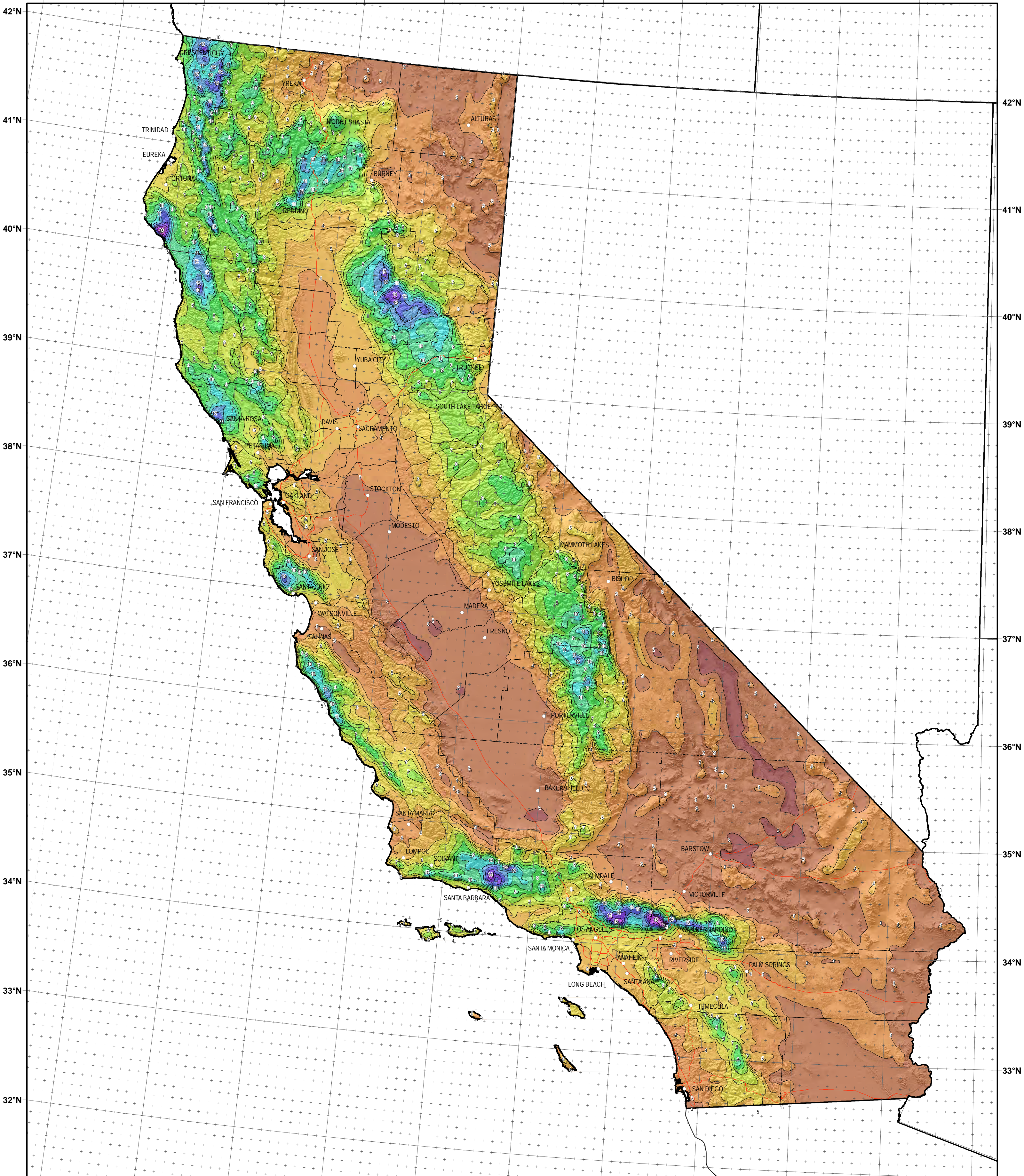


126°W 125°W 124°W 123°W 122°W 121°W 120°W 119°W 118°W 117°W 116°W 115°W



124°W 123°W 122°W 121°W 120°W 119°W 118°W 117°W 116°W 115°W 114°W

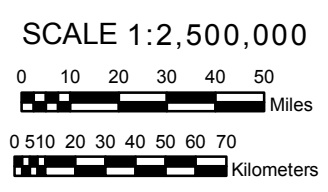
# CALIFORNIA

**NOAA Atlas 14, Volume 6, Version 2**  
**California**

**Isopluvials of 25-year 24-hour precipitation in inches**



Prepared by U.S. DEPARTMENT OF COMMERCE  
NATIONAL OCEANIC AND ATMOSPHERIC ADMINISTRATION  
NATIONAL WEATHER SERVICE  
OFFICE OF HYDROLOGIC DEVELOPMENT  
HYDROMETEOROLOGICAL DESIGN STUDIES CENTER  
April 2011



Projection: Lambert Conformal Conic; Datum: NAD83; Standard Parallels: 38° and 45°; Central Meridian: 112°