

**NOAA Atlas 14, Volume 6, Version 2
California**



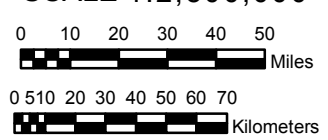
Prepared by U.S. DEPARTMENT OF COMMERCE
NATIONAL OCEANIC AND ATMOSPHERIC ADMINISTRATION
NATIONAL WEATHER SERVICE
OFFICE OF HYDROLOGIC DEVELOPMENT
HYDROMETEOROLOGICAL DESIGN STUDIES CENTER
April 2011



CALIFORNIA

Isopluvials of 1-year 6-hour precipitation in inches

SCALE 1:2,500,000



Projection: Lambert Conformal Conic; Datum: NAD83; Standard Parallels: 38° and 45°; Central Meridian: 112°