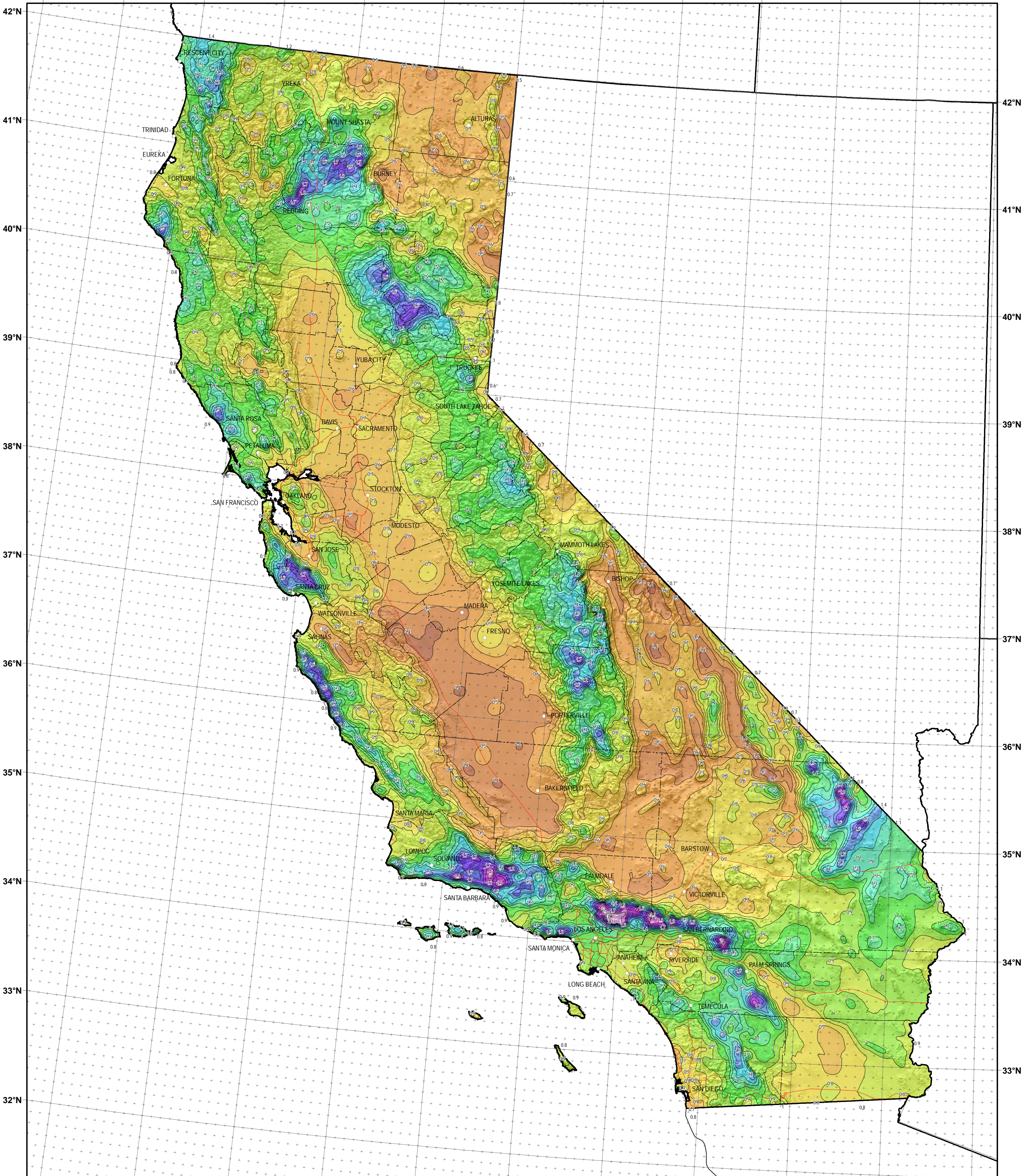


126°W 125°W 124°W 123°W 122°W 121°W 120°W 119°W 118°W 117°W 116°W 115°W



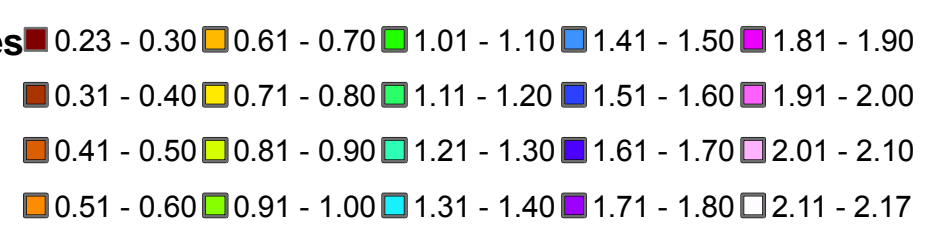
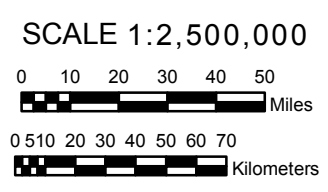
124°W 123°W 122°W 121°W 120°W 119°W 118°W 117°W 116°W 115°W 114°W

# CALIFORNIA

**NOAA Atlas 14, Volume 6, Version 2**  
**California**

**Isopluvials of 10-year 60-minute precipitation in inches**

Prepared by U.S. DEPARTMENT OF COMMERCE  
 NATIONAL OCEANIC AND ATMOSPHERIC ADMINISTRATION  
 NATIONAL WEATHER SERVICE  
 OFFICE OF HYDROLOGIC DEVELOPMENT  
 HYDROMETEOROLOGICAL DESIGN STUDIES CENTER  
 April 2011



Projection: Lambert Conformal Conic; Datum: NAD83; Standard Parallels: 38° and 45°; Central Meridian: 112°