

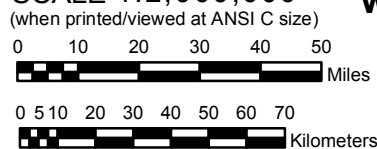
**UPDATED IN
VOLUME 6**

ARIZONA

**NOAA Atlas 14, Volume 1, Version 5
Semiarid Southwestern United States**

Prepared by U.S. DEPARTMENT OF COMMERCE
NATIONAL OCEANIC AND ATMOSPHERIC ADMINISTRATION
NATIONAL WEATHER SERVICE
OFFICE OF HYDROLOGIC DEVELOPMENT
HYDROMETEOROLOGICAL DESIGN STUDIES CENTER
June 2006

SCALE 1:2,000,000
(when printed/viewed at ANSI C size)



**Isopluals of 24 hour precipitation (inches)
with Average Recurrence Interval of 5 years**

See NOAA Atlas 14 documentation for factors to
convert to Annual Exceedance Probabilities for
all estimates below 25 years



Inches

0.90 - 1.00	2.01 - 2.20	3.21 - 3.40	5.01 - 5.50	8.01 - 8.50
1.01 - 1.20	2.21 - 2.40	3.41 - 3.60	5.51 - 6.00	8.51 - 9.00
1.21 - 1.40	2.41 - 2.60	3.61 - 3.80	6.01 - 6.50	9.01 - 9.50
1.41 - 1.60	2.61 - 2.80	3.81 - 4.00	6.51 - 7.00	
1.61 - 1.80	2.81 - 3.00	4.01 - 4.50	7.01 - 7.50	
1.81 - 2.00	3.01 - 3.20	4.51 - 5.00	7.51 - 8.00	

Projection: Lambert Conformal Conic; Datum NAD83; Standard Parallels: 38° and 45°; Central Meridian 112°