

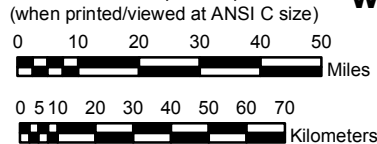
**UPDATED IN  
VOLUME 6**

# ARIZONA

**NOAA Atlas 14, Volume 1, Version 5  
Semiarid Southwestern United States**

Prepared by U.S. DEPARTMENT OF COMMERCE  
NATIONAL OCEANIC AND ATMOSPHERIC ADMINISTRATION  
NATIONAL WEATHER SERVICE  
OFFICE OF HYDROLOGIC DEVELOPMENT  
HYDROMETEOROLOGICAL DESIGN STUDIES CENTER  
June 2006

SCALE 1:2,000,000  
(when printed/viewed at ANSI C size)



**Isopluals of 24 hour precipitation (inches)  
with Average Recurrence Interval of 50 years**

See NOAA Atlas 14 documentation for factors to  
convert to Annual Exceedance Probabilities for  
all estimates below 25 years



**Inches**

1.38 - 1.40	2.41 - 2.60	4.51 - 5.00	9.01 - 10.00	15.01 - 16.00
1.41 - 1.60	2.61 - 2.80	5.01 - 5.50	10.01 - 11.00	16.01 - 17.00
1.61 - 1.80	2.81 - 3.00	5.51 - 6.00	11.01 - 12.00	
1.81 - 2.00	3.01 - 3.50	6.01 - 7.00	12.01 - 13.00	
2.01 - 2.20	3.51 - 4.00	7.01 - 8.00	13.01 - 14.00	
2.21 - 2.40	4.01 - 4.50	8.01 - 9.00	14.01 - 15.00	

Projection: Lambert Conformal Conic; Datum: NAD83; Standard Parallels: 38° and 45°; Central Meridian: 112°