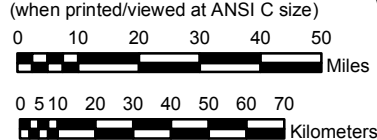


**NOAA Atlas 14, Volume 1, Version 5
Semi-arid Southwestern United States**

Prepared by U.S. DEPARTMENT OF COMMERCE
NATIONAL OCEANIC AND ATMOSPHERIC ADMINISTRATION
NATIONAL WEATHER SERVICE
OFFICE OF HYDROLOGIC DEVELOPMENT
HYDROMETEOROLOGICAL DESIGN STUDIES CENTER
June 2006

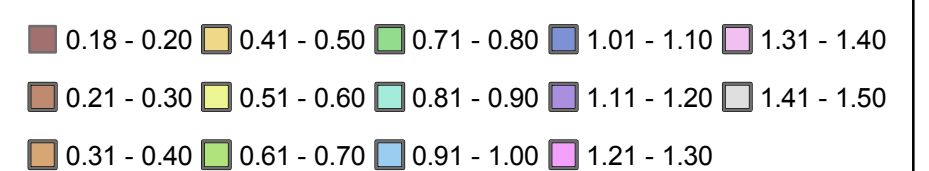
SCALE 1:2,000,000
(when printed/viewed at ANSI C size)



**Isopluvials of 60 minute precipitation (inches)
with Average Recurrence Interval of 1 year**

See NOAA Atlas 14 documentation for factors to
convert to Annual Exceedance Probabilities for
all estimates below 25 years

Inches



Projection: Lambert Conformal Conic; Datum NAD83; Standard Parallels: 38° and 45°; Central Meridian 112°