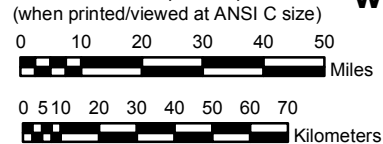


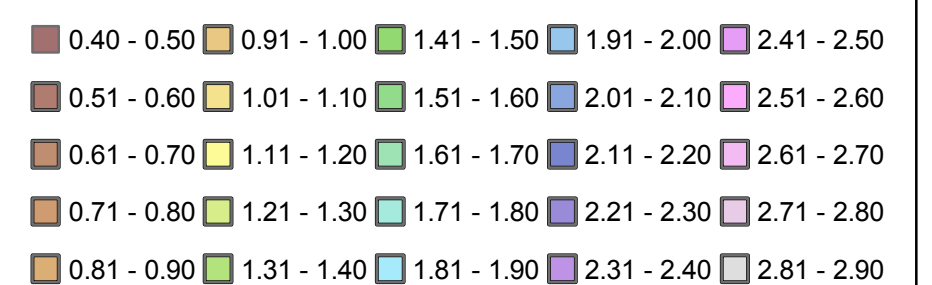
**NOAA Atlas 14, Volume 1, Version 5
Semi-arid Southwestern United States**

Prepared by U.S. DEPARTMENT OF COMMERCE
NATIONAL OCEANIC AND ATMOSPHERIC ADMINISTRATION
NATIONAL WEATHER SERVICE
OFFICE OF HYDROLOGIC DEVELOPMENT
HYDROMETEOROLOGICAL DESIGN STUDIES CENTER
June 2006

SCALE 1:2,000,000
(when printed/viewed at ANSI C size)



Inches



Projection: Lambert Conformal Conic, Datum NAD83, Standard Parallels: 38° and 45°, Central Meridian 112°