

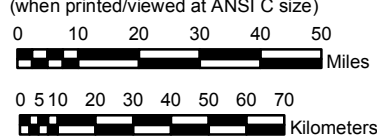
**UPDATED IN
VOLUME 6**

ARIZONA

**NOAA Atlas 14, Volume 1, Version 5
Semiarid Southwestern United States**

Prepared by U.S. DEPARTMENT OF COMMERCE
NATIONAL OCEANIC AND ATMOSPHERIC ADMINISTRATION
NATIONAL WEATHER SERVICE
OFFICE OF HYDROLOGIC DEVELOPMENT
HYDROMETEOROLOGICAL DESIGN STUDIES CENTER
June 2006

SCALE 1:2,000,000
(when printed/viewed at ANSI C size)



**Isopluvials of 60 minute precipitation (inches)
with Average Recurrence Interval of 100 years**

See NOAA Atlas 14 documentation for factors to
convert to Annual Exceedance Probabilities for
all estimates below 25 years



Inches

0.90 - 1.00	1.31 - 1.40	1.81 - 2.00	2.81 - 3.00	3.81 - 4.00
0.91 - 1.00	1.41 - 1.50	2.01 - 2.20	3.01 - 3.20	4.01 - 4.20
1.01 - 1.10	1.51 - 1.60	2.21 - 2.40	3.21 - 3.40	
1.11 - 1.20	1.61 - 1.70	2.41 - 2.60	3.41 - 3.60	
1.21 - 1.30	1.71 - 1.80	2.61 - 2.80	3.61 - 3.80	

Projection: Lambert Conformal Conic, Datum NAD83, Standard Parallels: 38° and 45°; Central Meridian 112°.