

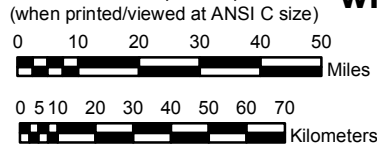
**UPDATED IN
VOLUME 6**

ARIZONA

**NOAA Atlas 14, Volume 1, Version 5
Semiarid Southwestern United States**

Prepared by U.S. DEPARTMENT OF COMMERCE
NATIONAL OCEANIC AND ATMOSPHERIC ADMINISTRATION
NATIONAL WEATHER SERVICE
OFFICE OF HYDROLOGIC DEVELOPMENT
HYDROMETEOROLOGICAL DESIGN STUDIES CENTER
June 2006

SCALE 1:2,000,000
(when printed/viewed at ANSI C size)

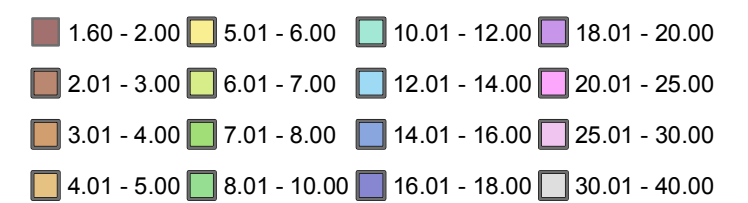


**Isopluvials of 10 day precipitation (inches)
with Average Recurrence Interval of 100 years**

See NOAA Atlas 14 documentation for factors to
convert to Annual Exceedance Probabilities for
all estimates below 25 years



Inches



Projection: Lambert Conformal Conic; Datum: NAD83; Standard Parallels: 38° and 45°; Central Meridian: 112°