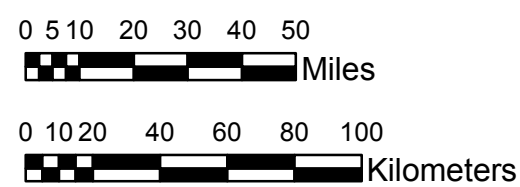


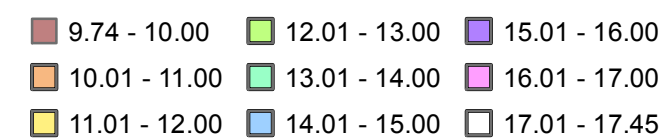
**NOAA Atlas 14, Volume 9, Version 2**  
**Southeastern States**



Prepared by U.S. DEPARTMENT OF COMMERCE  
 NATIONAL OCEANIC AND ATMOSPHERIC ADMINISTRATION  
 NATIONAL WEATHER SERVICE  
 OFFICE OF HYDROLOGIC DEVELOPMENT  
 HYDROMETEOROLOGICAL DESIGN STUDIES CENTER  
 April 2013



**FLORIDA**  
**Isopluvials of 2-year 30-day precipitation in inches**  
**SCALE 1:2,250,000**



Legend based on entire Volume 9 project area.

Projection: Lambert Conformal Conic; Datum NAD83; Standard Parallels: 26°N and 30°N; Central Meridian 84°W.