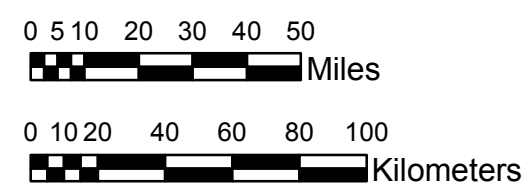


NOAA Atlas 14, Volume 9, Version 2
Southeastern States



Prepared by U.S. DEPARTMENT OF COMMERCE
 NATIONAL OCEANIC AND ATMOSPHERIC ADMINISTRATION
 NATIONAL WEATHER SERVICE
 OFFICE OF HYDROLOGIC DEVELOPMENT
 HYDROMETEOROLOGICAL DESIGN STUDIES CENTER
 April 2013



FLORIDA
 Isopluvials of 100-year 6-hour precipitation in inches
 SCALE 1:2,250,000

4.14 - 4.50	6.01 - 6.50	8.01 - 8.50	10.01 - 10.50
4.51 - 5.00	6.51 - 7.00	8.51 - 9.00	10.51 - 11.00
5.01 - 5.50	7.01 - 7.50	9.01 - 9.50	11.01 - 11.50
5.51 - 6.00	7.51 - 8.00	9.51 - 10.00	11.51 - 11.68

Projection: Lambert Conformal Conic; Datum NAD83; Standard Parallels: 26°N and 30°N; Central Meridian 84°W.

Legend based on entire Volume 9 project area.