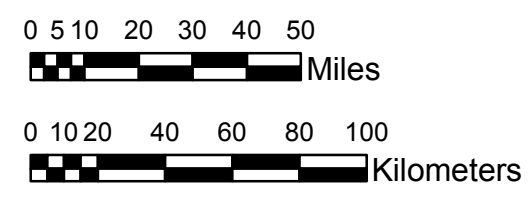


NOAA Atlas 14, Volume 9, Version 2
Southeastern States



Prepared by U.S. DEPARTMENT OF COMMERCE
 NATIONAL OCEANIC AND ATMOSPHERIC ADMINISTRATION
 NATIONAL WEATHER SERVICE
 OFFICE OF HYDROLOGIC DEVELOPMENT
 HYDROMETEOROLOGICAL DESIGN STUDIES CENTER
 April 2013



FLORIDA
Isopluvials of 100-year 48-hour precipitation in inches
SCALE 1:2,250,000

7.90 - 8.00	11.01 - 12.00	15.01 - 16.00	19.01 - 19.47
8.01 - 9.00	12.01 - 13.00	16.01 - 17.00	
9.01 - 10.00	13.01 - 14.00	17.01 - 18.00	
10.01 - 11.00	14.01 - 15.00	18.01 - 19.00	

Projection: Lambert Conformal Conic; Datum NAD83; Standard Parallels: 26°N and 30°N; Central Meridian 84°W.

Legend based on entire Volume 9 project area.