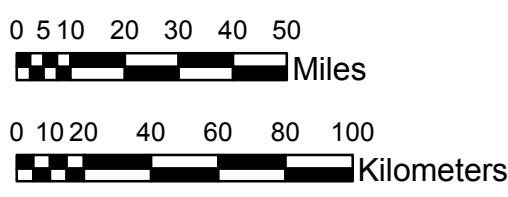


NOAA Atlas 14, Volume 9, Version 2
Southeastern States



Prepared by U.S. DEPARTMENT OF COMMERCE
 NATIONAL OCEANIC AND ATMOSPHERIC ADMINISTRATION
 NATIONAL WEATHER SERVICE
 OFFICE OF HYDROLOGIC DEVELOPMENT
 HYDROMETEOROLOGICAL DESIGN STUDIES CENTER
 April 2013



FLORIDA
Isopluvials of 100-year 24-hour precipitation in inches
SCALE 1:2,250,000

Projection: Lambert Conformal Conic; Datum NAD83; Standard Parallels: 26°N and 30°N; Central Meridian 84°W.

