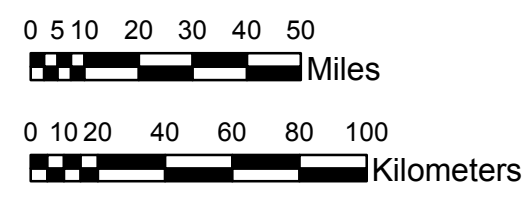


NOAA Atlas 14, Volume 9, Version 2
Southeastern States



Prepared by U.S. DEPARTMENT OF COMMERCE
 NATIONAL OCEANIC AND ATMOSPHERIC ADMINISTRATION
 NATIONAL WEATHER SERVICE
 OFFICE OF HYDROLOGIC DEVELOPMENT
 HYDROMETEOROLOGICAL DESIGN STUDIES CENTER
 April 2013



ALABAMA, GEORGIA
Isopluvials of 5-year 60-minute precipitation in inches
SCALE 1:2,250,000

- 1.46 - 1.60
- 1.61 - 1.80
- 1.81 - 2.00
- 2.01 - 2.20
- 2.21 - 2.40
- 2.41 - 2.60
- 2.61 - 2.80
- 2.81 - 3.00
- 3.01 - 3.16

Projection: Lambert Conformal Conic; Datum NAD83; Standard Parallels: 31°N and 34°N; Central Meridian 85°W.

Legend based on entire Volume 9 project area.