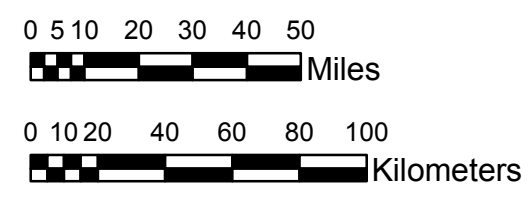


NOAA Atlas 14, Volume 9, Version 2
Southeastern States



Prepared by U.S. DEPARTMENT OF COMMERCE
 NATIONAL OCEANIC AND ATMOSPHERIC ADMINISTRATION
 NATIONAL WEATHER SERVICE
 OFFICE OF HYDROLOGIC DEVELOPMENT
 HYDROMETEOROLOGICAL DESIGN STUDIES CENTER
 April 2013



ALABAMA, GEORGIA
Isopluvials of 5-year 24-hour precipitation in inches
SCALE 1:2,250,000

3.85 - 4.00	4.51 - 5.00	5.51 - 6.00	6.51 - 7.00
4.01 - 4.50	5.01 - 5.50	6.01 - 6.50	7.01 - 7.50
			7.51 - 7.92

Projection: Lambert Conformal Conic; Datum NAD83; Standard Parallels: 31°N and 34°N; Central Meridian 85°W.

Legend based on entire Volume 9 project area.