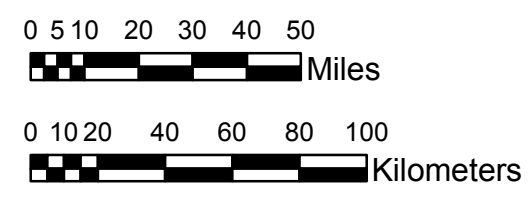


NOAA Atlas 14, Volume 9, Version 2
Southeastern States



Prepared by U.S. DEPARTMENT OF COMMERCE
 NATIONAL OCEANIC AND ATMOSPHERIC ADMINISTRATION
 NATIONAL WEATHER SERVICE
 OFFICE OF HYDROLOGIC DEVELOPMENT
 HYDROMETEOROLOGICAL DESIGN STUDIES CENTER
 April 2013



ALABAMA, GEORGIA
Isopluvials of 50-year 6-hour precipitation in inches
SCALE 1:2,250,000

3.71 - 4.00	5.51 - 6.00	7.51 - 8.00	9.51 - 9.76
4.01 - 4.50	6.01 - 6.50	8.01 - 8.50	
4.51 - 5.00	6.51 - 7.00	8.51 - 9.00	
5.01 - 5.50	7.01 - 7.50	9.01 - 9.50	

Projection: Lambert Conformal Conic; Datum NAD83; Standard Parallels: 31°N and 34°N; Central Meridian 85°W.

Legend based on entire Volume 9 project area.