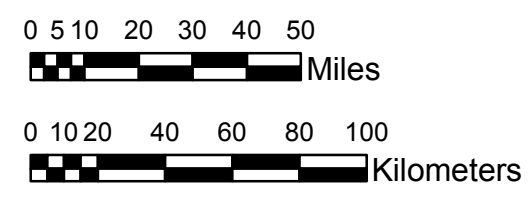


NOAA Atlas 14, Volume 9, Version 2
Southeastern States



Prepared by U.S. DEPARTMENT OF COMMERCE
 NATIONAL OCEANIC AND ATMOSPHERIC ADMINISTRATION
 NATIONAL WEATHER SERVICE
 OFFICE OF HYDROLOGIC DEVELOPMENT
 HYDROMETEOROLOGICAL DESIGN STUDIES CENTER
 April 2013



ALABAMA, GEORGIA
Isopluals of 2-year 60-minute precipitation in inches
SCALE 1:2,250,000

1.22 - 1.30	1.61 - 1.70	2.01 - 2.10	2.41 - 2.50
1.31 - 1.40	1.71 - 1.80	2.11 - 2.20	2.51 - 2.59
1.41 - 1.50	1.81 - 1.90	2.21 - 2.30	
1.51 - 1.60	1.91 - 2.00	2.31 - 2.40	

Projection: Lambert Conformal Conic; Datum NAD83; Standard Parallels: 31°N and 34°N; Central Meridian 85°W.

Legend based on entire Volume 9 project area.