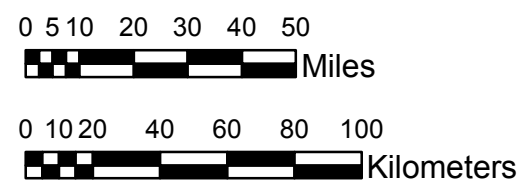


NOAA Atlas 14, Volume 9, Version 2
Southeastern States



Prepared by U.S. DEPARTMENT OF COMMERCE
 NATIONAL OCEANIC AND ATMOSPHERIC ADMINISTRATION
 NATIONAL WEATHER SERVICE
 OFFICE OF HYDROLOGIC DEVELOPMENT
 HYDROMETEOROLOGICAL DESIGN STUDIES CENTER
 April 2013



ALABAMA, GEORGIA
Isopluvials of 2-year 60-day precipitation in inches
SCALE 1:2,250,000

Projection: Lambert Conformal Conic; Datum NAD83; Standard Parallels: 31°N and 34°N; Central Meridian 85°W.

14.19 - 15.00	17.01 - 18.00	20.01 - 21.00	23.01 - 24.00
15.01 - 16.00	18.01 - 19.00	21.01 - 22.00	24.01 - 25.00
16.01 - 17.00	19.01 - 20.00	22.01 - 23.00	25.01 - 26.09

Legend based on entire Volume 9 project area.