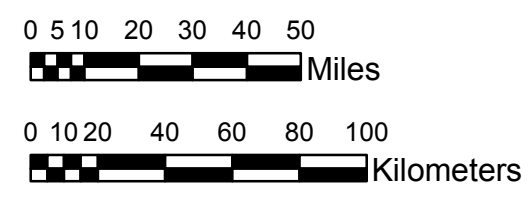


NOAA Atlas 14, Volume 9, Version 2
Southeastern States



Prepared by U.S. DEPARTMENT OF COMMERCE
 NATIONAL OCEANIC AND ATMOSPHERIC ADMINISTRATION
 NATIONAL WEATHER SERVICE
 OFFICE OF HYDROLOGIC DEVELOPMENT
 HYDROMETEOROLOGICAL DESIGN STUDIES CENTER
 April 2013



ALABAMA, GEORGIA
Isopluvials of 2-year 48-hour precipitation in inches
SCALE 1:2,250,000

3.81 - 4.00	4.76 - 5.00	5.76 - 6.00	6.76 - 7.00
4.01 - 4.25	5.01 - 5.25	6.01 - 6.25	7.01 - 7.14
4.26 - 4.50	5.26 - 5.50	6.26 - 6.50	
4.51 - 4.75	5.51 - 5.75	6.51 - 6.75	

Projection: Lambert Conformal Conic; Datum NAD83; Standard Parallels: 31°N and 34°N; Central Meridian 85°W.

Legend based on entire Volume 9 project area.