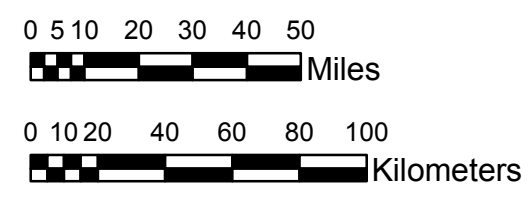


**NOAA Atlas 14, Volume 9, Version 2**  
**Southeastern States**



Prepared by U.S. DEPARTMENT OF COMMERCE  
 NATIONAL OCEANIC AND ATMOSPHERIC ADMINISTRATION  
 NATIONAL WEATHER SERVICE  
 OFFICE OF HYDROLOGIC DEVELOPMENT  
 HYDROMETEOROLOGICAL DESIGN STUDIES CENTER  
 April 2013



**ALABAMA, GEORGIA**  
**Isopluvials of 25-year 60-minute precipitation in inches**  
**SCALE 1:2,250,000**

1.96 - 2.00	2.51 - 2.75	3.26 - 3.50	4.01 - 4.25
2.01 - 2.25	2.76 - 3.00	3.51 - 3.75	4.26 - 4.43
2.26 - 2.50	3.01 - 3.25	3.76 - 4.00	

Projection: Lambert Conformal Conic; Datum NAD83; Standard Parallels: 31°N and 34°N; Central Meridian 85°W.

Legend based on entire Volume 9 project area.