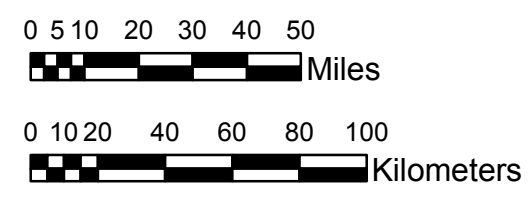


NOAA Atlas 14, Volume 9, Version 2
Southeastern States



Prepared by U.S. DEPARTMENT OF COMMERCE
 NATIONAL OCEANIC AND ATMOSPHERIC ADMINISTRATION
 NATIONAL WEATHER SERVICE
 OFFICE OF HYDROLOGIC DEVELOPMENT
 HYDROMETEOROLOGICAL DESIGN STUDIES CENTER
 April 2013



ALABAMA, GEORGIA
Isopluvials of 1-year 6-hour precipitation in inches
SCALE 1:2,250,000

1.87 - 2.00	2.41 - 2.60	3.01 - 3.20	3.61 - 3.80
2.01 - 2.20	2.61 - 2.80	3.21 - 3.40	3.81 - 3.86
2.21 - 2.40	2.81 - 3.00	3.41 - 3.60	

Projection: Lambert Conformal Conic; Datum NAD83; Standard Parallels: 31°N and 34°N; Central Meridian 85°W.

Legend based on entire Volume 9 project area.