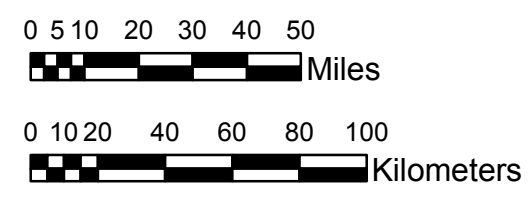


**NOAA Atlas 14, Volume 9, Version 2**  
**Southeastern States**



Prepared by U.S. DEPARTMENT OF COMMERCE  
 NATIONAL OCEANIC AND ATMOSPHERIC ADMINISTRATION  
 NATIONAL WEATHER SERVICE  
 OFFICE OF HYDROLOGIC DEVELOPMENT  
 HYDROMETEOROLOGICAL DESIGN STUDIES CENTER  
 April 2013



**ALABAMA, GEORGIA**  
**Isopluvials of 10-year 6-hour precipitation in inches**  
**SCALE 1:2,250,000**

2.80 - 3.00	3.76 - 4.00	4.76 - 5.00	5.76 - 6.00
3.01 - 3.25	4.01 - 4.25	5.01 - 5.25	6.01 - 6.25
3.26 - 3.50	4.26 - 4.50	5.26 - 5.50	6.26 - 6.58
3.51 - 3.75	4.51 - 4.75	5.51 - 5.75	

Projection: Lambert Conformal Conic; Datum NAD83; Standard Parallels: 31°N and 34°N; Central Meridian 85°W.

Legend based on entire Volume 9 project area.