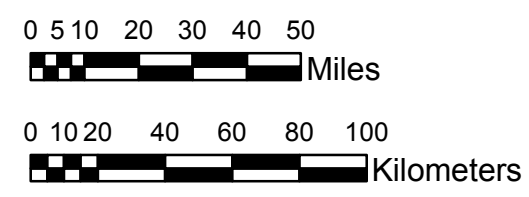


**NOAA Atlas 14, Volume 9, Version 2**  
**Southeastern States**



Prepared by U.S. DEPARTMENT OF COMMERCE  
 NATIONAL OCEANIC AND ATMOSPHERIC ADMINISTRATION  
 NATIONAL WEATHER SERVICE  
 OFFICE OF HYDROLOGIC DEVELOPMENT  
 HYDROMETEOROLOGICAL DESIGN STUDIES CENTER  
 April 2013



**ALABAMA, GEORGIA**  
**Isopluvials of 10-year 60-minute precipitation in inches**  
**SCALE 1:2,250,000**

- 1.66 - 1.75
- 1.76 - 2.00
- 2.01 - 2.25
- 2.26 - 2.50
- 2.51 - 2.75
- 2.76 - 3.00
- 3.01 - 3.25
- 3.26 - 3.50
- 3.51 - 3.66

Projection: Lambert Conformal Conic; Datum NAD83; Standard Parallels: 31°N and 34°N; Central Meridian 85°W.

Legend based on entire Volume 9 project area.