

67°W

66°W

65°W

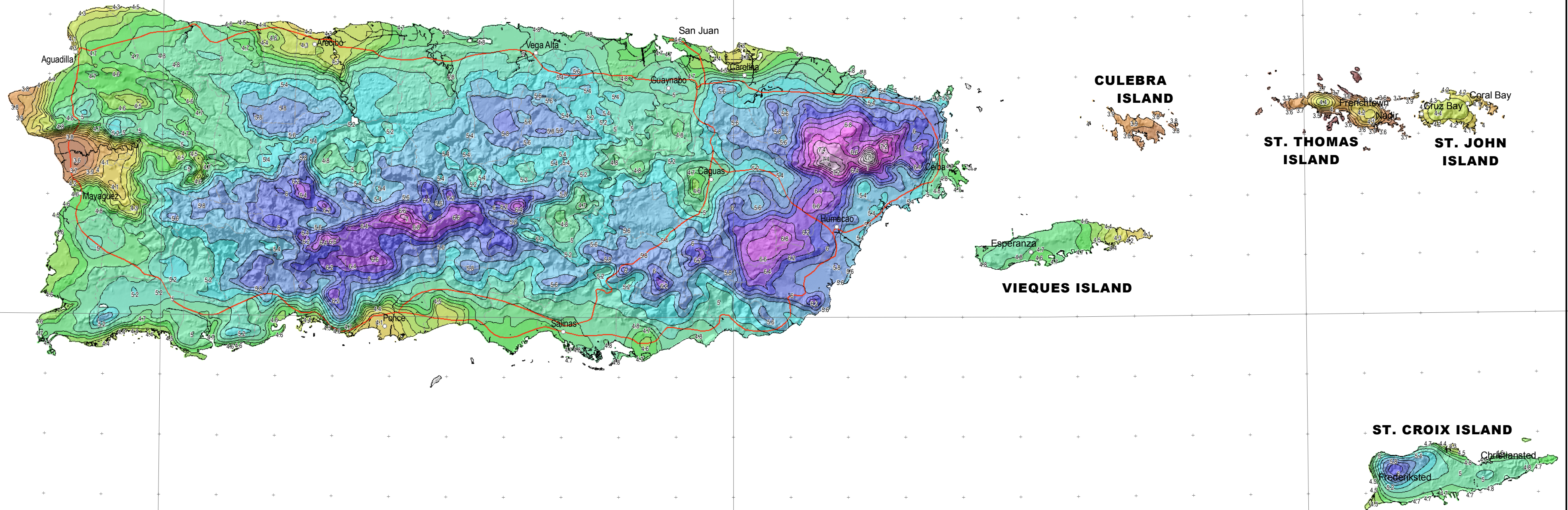
18°N

18°N

67°W

66°W

65°W

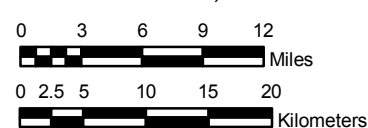


**NOAA Atlas 14, Volume 3, Version 4**  
**Puerto Rico and U.S. Virgin Islands**



Prepared by U.S. DEPARTMENT OF COMMERCE  
 NATIONAL OCEANIC AND ATMOSPHERIC ADMINISTRATION  
 NATIONAL WEATHER SERVICE  
 OFFICE OF HYDROLOGIC DEVELOPMENT  
 HYDROMETEOROLOGICAL DESIGN STUDIES CENTER  
 March 2008

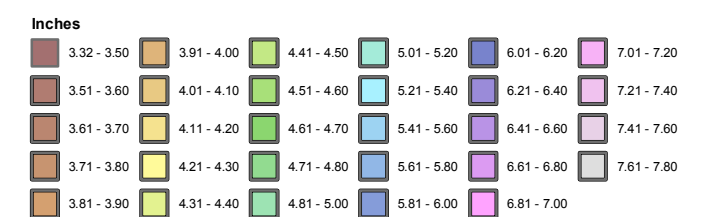
SCALE 1:600,000 (when printed/viewed at ANSI C size)



**PUERTO RICO AND U.S. VIRGIN ISLANDS**

**Isopluvials of 24 hour precipitation (inches)**  
**with Average Recurrence Interval of 2 years**

See NOAA Atlas 14 documentation for factors to convert to Annual  
 Exceedance Probabilities for all estimates below 25 years



Projection: Lambert Conformal Conic; Datum NAD83; Standard Parallels: 38° and 45°; Central Meridian 66°