

67°W

66°W

65°W

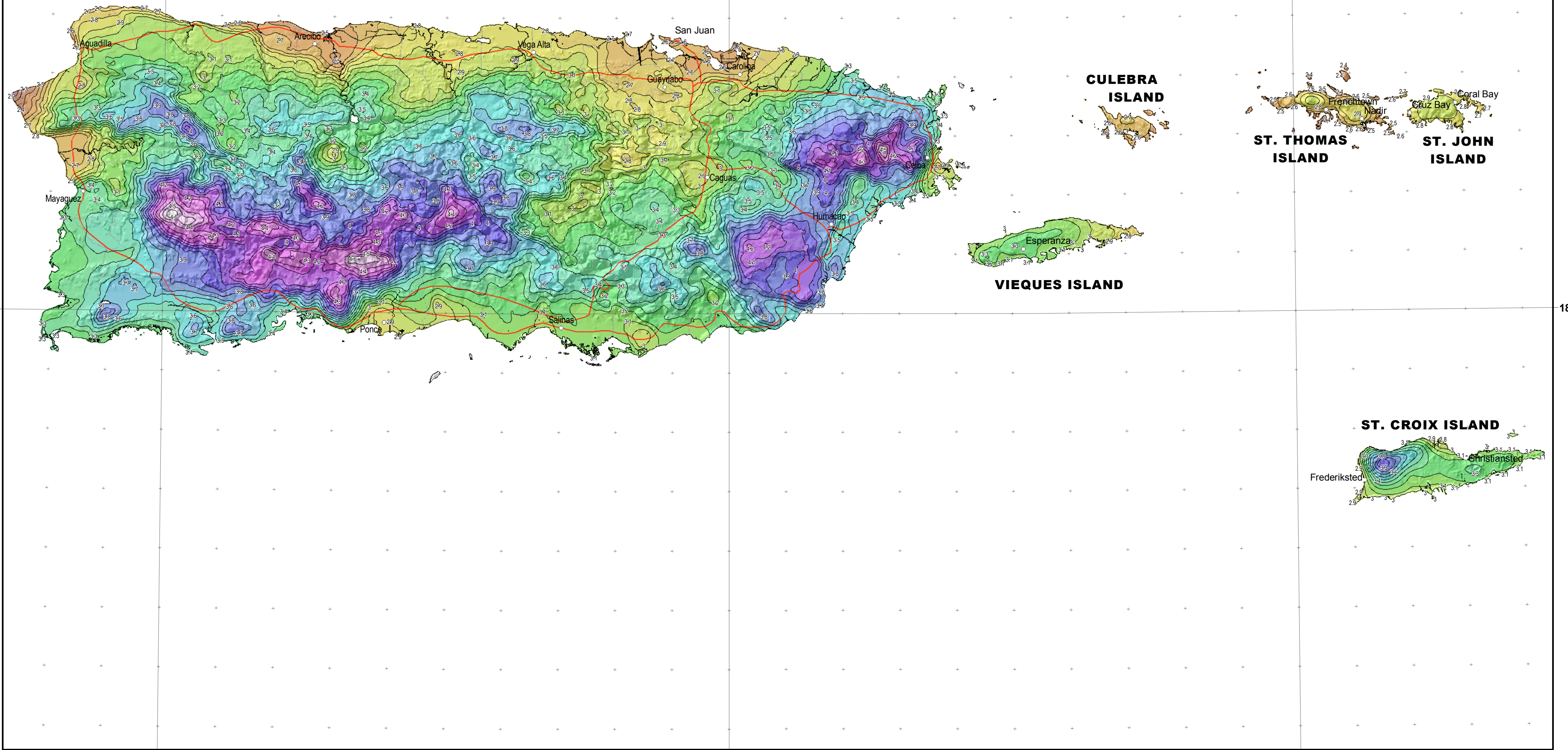
18°N

18°N

67°W

66°W

65°W

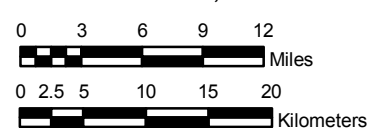


NOAA Atlas 14, Volume 3, Version 4
Puerto Rico and U.S. Virgin Islands



Prepared by U.S. DEPARTMENT OF COMMERCE
 NATIONAL OCEANIC AND ATMOSPHERIC ADMINISTRATION
 NATIONAL WEATHER SERVICE
 OFFICE OF HYDROLOGIC DEVELOPMENT
 HYDROMETEOROLOGICAL DESIGN STUDIES CENTER
 March 2008

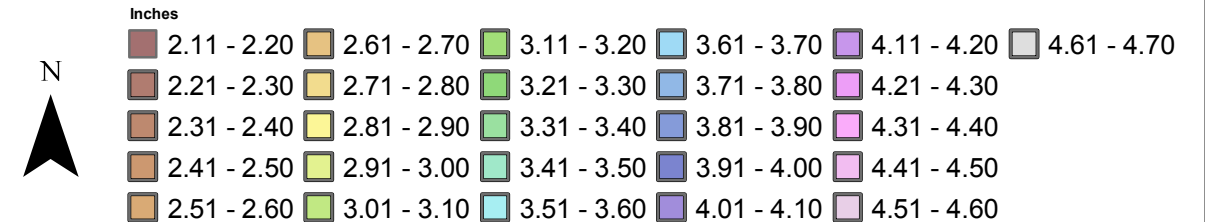
SCALE 1:600,000 (when printed/viewed at ANSI C size)



PUERTO RICO AND U.S. VIRGIN ISLANDS

Isopluvials of 60 minute precipitation (inches)
with Average Recurrence Interval of 25 years

See NOAA Atlas 14 documentation for factors to convert to Annual
 Exceedance Probabilities for all estimates below 25 years



Projection: Lambert Conformal Conic; Datum NAD83; Standard Parallels: 38° and 45°; Central Meridian 66°